



GAT MONTHLY MEMBERSHIP PROGRESS REPORT

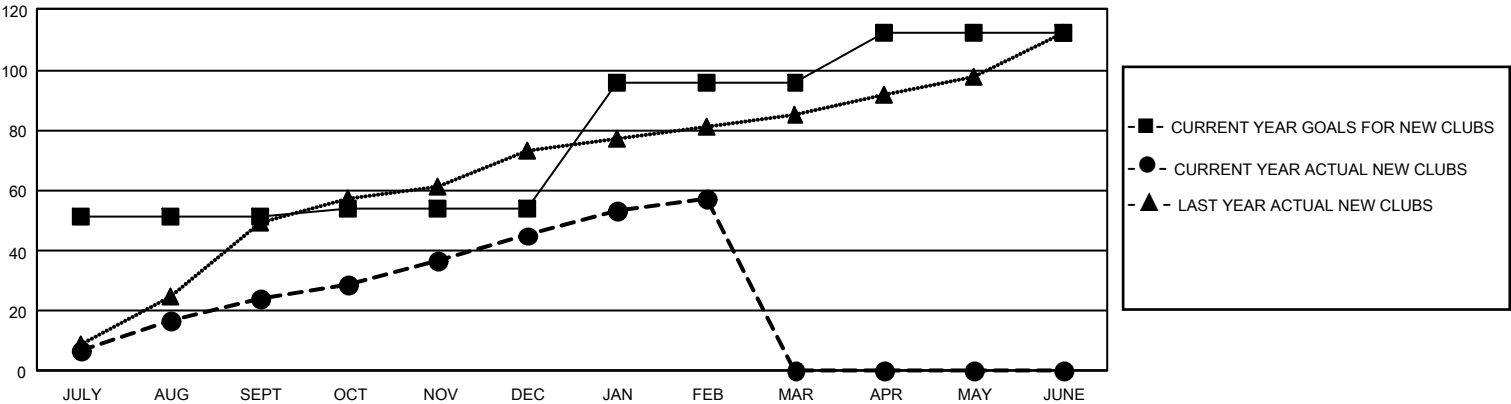
Results as of: 2/28/2025

GMT Constitutional Area 6 - I, Group E

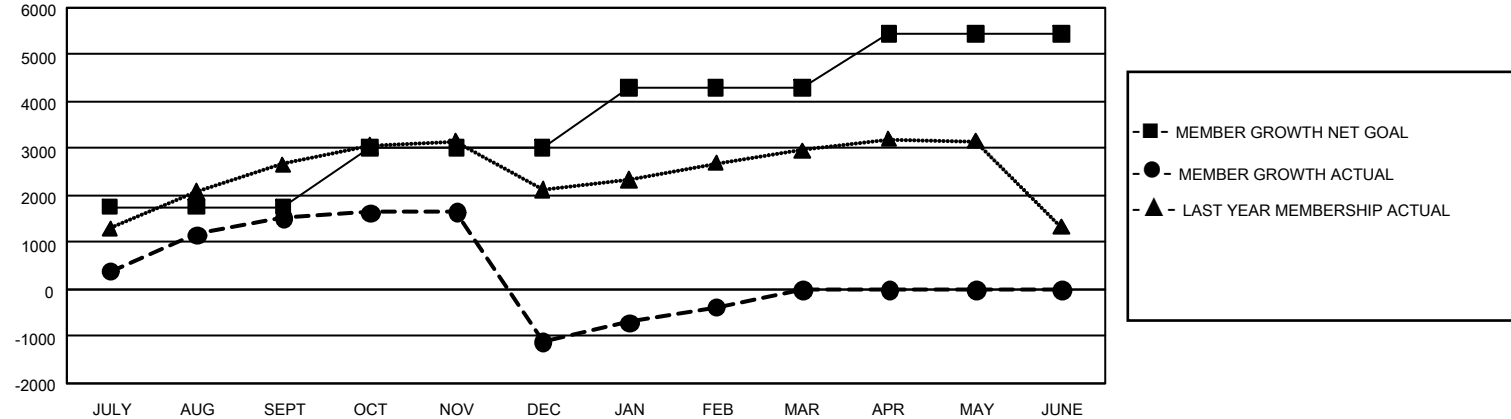
REPORT DOES NOT INCLUDE CLUBS IN UNDISTRICTED AREAS.

Clubs				Members			
RESULTS FOR 2024-2025				RESULTS FOR 2024-2025			
QUARTER	NEW CLUB GOAL	NEW CLUBS	DROPPED CLUBS	QUARTER	MEMBER GROWTH NET GOAL	MEMBER GROWTH ACTUAL	DROPPED MEMBERS ACTUAL (including transfers)
JULY/AUG/SEPT	153	24	8	JULY/AUG/SEPT	1753	3,174	1,354
OCT/NOV/DEC	9	21	112	OCT/NOV/DEC	1270	1,376	3,886
JAN/FEB/MAR	126	12	4	JAN/FEB/MAR	1270	1,427	336
APR/MAY/JUNE	48	0	0	APR/MAY/JUNE	1150	0	0

GOALS AND ACTUAL NEW CLUBS CUMULATIVE



GOALS AND ACTUAL MEMBERS CUMULATIVE



DROPPED CLUBS: 124		830 CLUBS OF 1,554 ADDED 1 OR MORE NEW MEMBERS	<u>GENDER DISTRIBUTION</u>	
<u>DROPPED MEMBERS</u>			MALE	37,831 (79.14%)
DECEASED	126	CLICK HERE FOR CUMULATIVE MEMBERSHIP DATA	FEMALE	9,970 (20.86%)
CLUB CANCELLED	1,822		NON BINARY	0 (0.00%)
OTHER	3,617		PREFER NOT TO ANSWER	3 (0.01%)
TOTAL	5,565		TOTAL FAMILY UNIT MEMBERS	0
			FAMILY MEMBERS PAYING HALF DUES	0